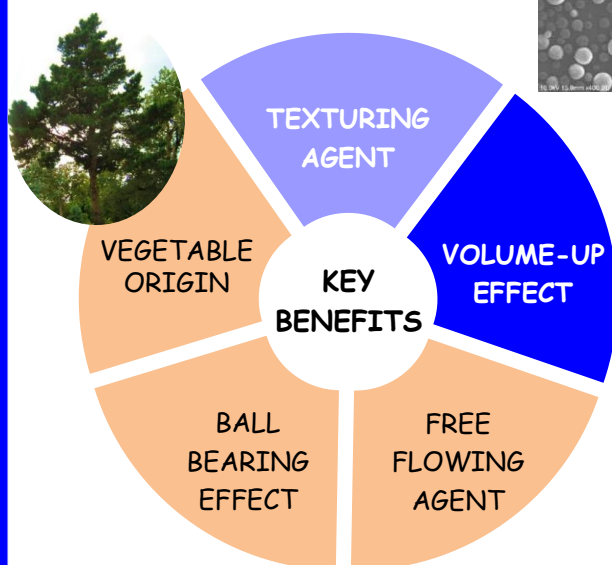
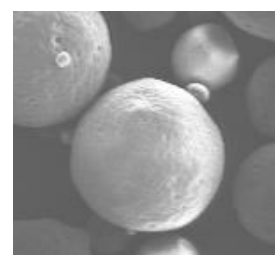
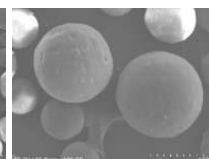
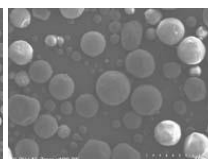
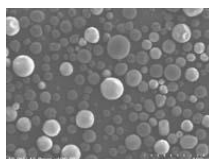


COMPOSITION	
INCI Name	CELLULOSE
CAS Number	9004-34-6
EC Number	232-674-9

COSMOS  
APPROVED

	D-30	D-50	D-100
Particle size	20-40 $\mu\text{m}$	40-60 $\mu\text{m}$	80-120 $\mu\text{m}$
Oil absorption (ml/100g)	~ 60	~ 56	~ 53
Water absorption (%)	~140	~140	~140



## Use guideline

- Cold/Hot process
- Easily dispersible

### Emulsions:

- Incorporate either in the water or oil phase or after the emulsion is formed.
- Use level: 0,1-2%

### Powders:

- Mix with other powders
- Reduce powder agglomeration
- CELLULOBEADS D-50 are ideal for both loose and pressed powders since they allow a better adherence of the powder
- Use level: up to 10%

## Chemical and physical properties

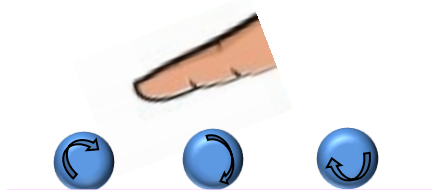
- White to yellowish free-flowing beads
- Odorless
- Superior hydrophilicity
- Biodegradable and renewable  
Biodegradability index > 67% according to OECD 301F standard



## Formulation

- **pH:** useful over a wide range of pH
- **Heat:** stable
- **Treated pigments:** compatible with all DAITO's treatments
- **Alcohols:** compatible
- **Organic solvents:** compatible
- **Thickeners:** compatible with carbomers, xanthan gums, acrylic biopolymers (MAKIMOUSSE) and cellulose derivatives (MOISPRAY C)

## Cosmetic benefits



- Their spherical shape and smooth surface give very good lubricant properties
- Give formulations a silky and smooth feel
- Enhance flow and spreading properties

## Applications

### FOUNDATIONS & HIGHLIGHTERS

DL/E229 Evanescent W/Si Liquid Foundation (D-30)  
 DF/E360 Softness Velvet Foundation (D-50)  
 DF/E718 Cosmos Semi-pressed Highlighter (D-50)

### BLUSHES

DF/E140 Smooth Chamallow Blush (D-50)  
 DF/E336 Jelly Glow Blush - Silicon Free (D-50)  
 DL/E417 Water Color Foundation (D-30)

### GEL

DT/E265 Sparkling Massage Gel (D-100)

### EYESHADOWS

DE/E141 Bumping Eyeshadow (D-30)  
 DE/E361 Velvet Gummy Eyeshadow Or Blush (D-50)  
 DE/E461 Natural Satiny Velvet Semi-pressed Powder (D-50)  
 DE/E677 Silky Slurry Eyeshadow (D-30)

### LIPSTICKS

DLP/E490 Lips & Cheeks Semi-pressed Powder (D-50)  
 DLP/E701 Cosmos Matte Lipcream (D-30)

### SHAMPOOS

DH/J001B Natural Dry Shampoo (D-30)

## Safety and regulatory information

**Product safety:** CELLULOSE produces non irritation to the skin and is non mutagenic. It is mildly irritating to the eyes.

**Material Safety Data Sheets** are available for all DAITO KASEI products.

**REACH:** CELLULOSE is exempted from registration.

CELLULOSE is listed on the major chemical inventories such CTFA, CosIng, AICS, DSL, KCID, IECIC2003 and/or IECIC2015.

## For additional information

### Please contact:

DAITO KASEI EUROPE SAS  
 62 boulevard Henri Navier  
 Taverparc Bât 5.2  
 95150 Taverny - FRANCE  
 ☎ : +33(0)1 30 40 01 01  
 ☎ : +33(0)1 30 40 01 11  
 ✉ : [dkeurope@dkeurope.fr](mailto:dkeurope@dkeurope.fr)

HEAD OFFICE  
 DAITO KASEI KOGYO Co., LTD  
 1-6-28 Akagawa, Asahiku  
 Osaka - JAPAN  
 ☎ : 81 6 6922 1632  
 ☎ : 81 6 6921 9562

DAITO KASEI CHINA  
 6F/room 612  
 555 Wuding road Jing An District  
 Shanghai, CHINA 200040  
 ☎ : +86 21 32 53 25 16

The information presented within this sheet is offered in good faith, and is based on our present state of knowledge. It is offered for informational and evaluation purposes only. User of DAITO KASEI product should initiate their own testing to determine the suitability of this product for their intended purpose. DAITO KASEI assumes no liability or responsibility for any damage to person or property resulting from the use of this product or the incorporation of this product into any final formulation or product. Statements concerning the use of this product are not to be construed as a recommendation, suggestion or inducement to use the product in any way or within any formulation that is unlawful to create or sell, that violates any applicable regulations or that infringes upon any patent. No liability arising out of such a use is assumed.